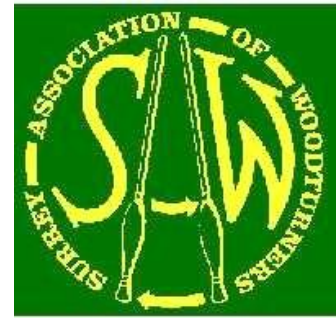


# Surrey Association of Woodturners



LOTTERY FUNDED



## Newsletter January 2018

Reports, News and Views from North West Surrey

### New Members

Welcome to Mr. Alistair Gray Member No. 756

### PAID UP MEMBERSHIPS for 2018 are 82

(As of going to press)

### Items for the Diary

18th February	Workshop Day	Club tuition
24th February	Princes Mead Shopping Centre -	Club Demonstration
9th March	Practical Evening	Practical Night
8th April	Axminster Basingstoke Store -	Club Demonstrators
13th April	Rod Page	Professional Turner

### TOP TIP's and articles

If you have a tip or article to share please email it to Colin Spain at the address shown in contacts at back of this newsletter.

If a tip keep it short, and if we are happy with it, I will include it in one of the newsletters.

### The club needs you help!

Are there any qualified PAT testers in our membership that would be willing to assist the club, if so please contact anyone of the committee for further details. Thanks in advance.

### IT'S A WIN, WIN OPPORTUNITY.

#### SAW 100 Club 2018 Reminder

Since its establishment in 2014 the SAW 100 Club has paid out £1400 plus in prize money and raised a similar amount to help the Club's funds, becoming both a rewarding and beneficial way of supporting the clubs activities.

The Xmas Draw saw a total prize fund of £146.70 with first out of the hat getting a cheque for £88.02. A very nice early Xmas present.

The final draw for 2017 was made at the AGM in January, when enrolment into the 2018 100 Club commenced.

**If you wish to participate in the 2018 draws it is not too late, application forms and rules are available at the end of this newsletter, as well as from the SAW website.**

**(<http://www.sawoodturners.org/handbook/100%20Club%20Rules%20V1.pdf>).**

I look forward to welcoming existing and new supporters to the SAW 100 Club.

## **The AGM – January 12<sup>th</sup>**

Another well attended meeting with 82 members, it's good to see so many members support an AGM. This year there were a few changes being proposed to the constitution so more on that later.

### **Chairman's Report AGM 2018 – John Sherwood**

*My second report as chairman is going to read very much as my first report as there has not been any radical change in what we do over the year. We have had five professional turners to demonstrate and Paul stood in for Simon Hope, two club turners and three practical nights. The outside events have been the Rural Life Centre, Dapdune wharf, GMES, Surrey Heath Show, Brooklands museum and at the end of the year Princes Mead finished their redecoration so we were able to return and had a good selling day. The club was also represented at the Fellowship of Woodworkers Show at Odiham along with six Sunday slots at the Axminster store in Basingstoke.*

*Jennie, as secretary, has kept the committee on their toes and has organised an interesting mix of demonstrators. Jennie also chivvies me quite regularly when I get a bit forgetful. Chris again deserves mention for his work on the website and with the camera on club nights.*

*David Stratton our treasurer is always busy particularly as our point of contact with the hall. He was also the "man with the hat" at Open Day which was very stressful for a few hours before someone turned up with keys to open the store rooms. Most importantly the books are always straight and up to date with clear, concise reports at committee meetings.*

*With Sylvia's retirement to the New Forest, Dorothy has stepped up to organise a tea rota which seems to have worked very well.*

*Colin Rowe, Robert and Chris have once again managed the filming and broadcasting side of club nights so that we can all see what is going on.*

*Max, Mike and Anna Marie have made a good job of running the raffle, Phil continues to keep the shop going and Tony and Duncan have been manning the club office table.*

*Workshop days have been fully subscribed, Colin Spain is responsible for their success. We could do with a few new tutors, if you feel you could pass on some of your knowledge and experience then see Colin today!*

*The other members of the committee, John Creasey, Mike Spaven and Bernie Walker are all very much involved in keeping the show on the road.*

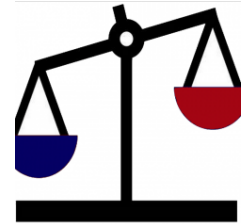
*Chris Wilde has found it difficult to manage a young family and regular committee attendance, and has decided not to offer himself for re-election this year. We thank Chris for what he has done and look forward to him re-joining the team later.*

*Your club can be proud of the very hard working committee. There are times when we feel we could do with another couple of members. To that end, later in the programme, we are proposing a change in our Constitution to increase the possible number of members on the committee from 8 to 10. We do not need to fill those places tonight but will be able to co-opt members during the year if necessary.*

*Finally, thank you all for your continued support for the club. Our professional demonstrators are always amazed at our attendance. However, there is still one job left to do – that is to beat Forest of Bere in the inter-club competition at Open Day!*

## The Treasurer, David Stratton,

Copies of the Statement of Income and Expenditure and Balance sheet had already been sent to all members who receive their Newsletters by Email. He had a few additional copies for anyone who wished a copy. Another year another statement of accounts. He then gave his report on the state of the club finances. His report was as follows:



*To keep it short and sweet I will go over the headline figures and those areas where additional comment may be helpful, but will be happy to receive questions at the end.*

*Firstly though, it is only right that I acknowledge that the outcome of this year's performance has been influenced by the hard work and, on occasion, the quick actions of a number of the club's members and my thanks go out to all of them. My thanks also go to Douglas Boud who has examined my calculations and found them acceptable.*

*On the basis of the Budget presented to the Committee in January 2017, the surplus for the year was projected at £358.10. The final cash surplus declared is £277.91.*

*From the Income & Expenditure Statements, you will note that the majority of the areas performed roughly in line with the previous year. The exceptions are:*

**Subscriptions** Income down £276. This is due to two factors firstly a drop in net membership, down 6, with a net loss of £192, and secondly the high number of members who joined us late in 2016 and had prepaid for 2017.

**Equipment** costs up over £1,100. This is largely due to two key purchases. Firstly £616 on a new Gazebo for the Club. This was required to replace units which had previously been loaned to the club by members. These, through long years of faithful service, needed to be replaced due to wear and tear. The new unit had its first outing at the GMES show in July and has been used at a number of our other outside demonstrations to very good effect. A further unit is planned for 2018.

Secondly, £818, on the purchase of a second small lathe. Some £447 of this cost was covered by a donation last year from the estate of the late Dr Margaret Cothay.

**Shop activity:** Whilst Income of £1738 against Costs of £2034 does not look good, showing a deficit of almost £300, these bland figures hide the fact that the value of stock held increased by almost £600. The Shop therefore showed a net profit for the club of some £300, which should materialise in future years as the stock is sold.

**Miscellaneous Income**, up £500. Some £400, is attributable to the quick thinking of Paul Nesbitt who secured, free of cost, a large supply of timber which was sold off to members at very reasonable costs. A further £320, was raised through the sale of various donated items.

**Xmas Charity Donations and Collections.** The Club receives two types of donation in any given year. Those deemed to be for the Club alone are recorded in the Miscellaneous Income figure, whilst any specifically designated for our Xmas Charity are recorded separately. The keen eyed amongst you will have noted the jump of Xmas income from £67.46 in 2016 to £353.10 in 2017. This is largely due to £250 from the sale of wood, referred to earlier, being designated as being part of this year's Xmas Charity collection.

In assessing the value to be paid to the Charity, we take the funds specifically donated and add to this the monies raised from the Xmas Raffles and Tea sales. In 2017 this brought the total donation to £665.55, which has been rounded up to £700, for which the Sam Beare and Woking Hospice were extremely grateful.

This payment is in addition to the numerous pieces of work donated by our members for sale through their shop outlet.

*In addition to the Xmas Charity, club members have donated over £100 to other good causes, including the National Trust and the Rural Life Centre, from a percentage of their sales achieved at the various demonstrations.*

*If you have any suggestions for our 2018 Charity please pass the suggestion to one of the committee.*

Both reports were agreed by the members.

### **To Determine Subscriptions for the coming Year**

*The last increase in fees was made in 2016, however, looking forward to 2018, given the healthy performance of the club over recent years, and without any significant changes foreseen, I am not seeking any increase in the level of subscription for 2018. I will, of course be very happy to receive payment of the 2018 Subscriptions and 100 Club after the business part of the AGM has been concluded.*

*Please remember that any member does have the right to propose an alternative level of subscription for consideration by the membership present.*

*The treasurer invited comment and questions from the members but there were none.*

***The subscription rate of £32 was proposed by David Stratton and seconded by Jennie Starbuck and agreed by a show of hands with none against.***

*The Treasurer took the opportunity to explain how the 100 club worked and the place it has in the club's finances. He invited members to pay subscriptions and join (or renew) 100 club places during the coffee break.*

### **To consider the proposal to change item 6.1.2 in the Rules and Constitution.**

*6.1.2 states: A maximum of eight elected Members who serve for one year. Retiring Committee Members who are willing to serve may stand for re-election.*

*Change to:*

*6.1.2 A maximum of ~~ten~~ elected Members who serve for one year. Retiring Committee Members who are willing to serve may stand for re-election.*

*This was put to the members explaining that we are a very active club and it would be helpful to have more committee members to share our some of the work undertaken on behalf of the members. Following a discussion, a proposal from the floor was made by Colin Stone that the maximum committee be up to 12 members plus the three officers. This was seconded by Barry Alder. There being no further discussion and Jennie Starbuck and David Stratton who had proposed the original number of 10 being happy to accept the change it was put to the members and carried with none against.*

*6.1.2 will now read: A maximum of twelve elected Members who serve for one year. Retiring Committee Members who are willing to serve may stand for re-election.*

*The members agreed that the committee could use its power under the constitution to co-opt new committee members as they were needed until the AGM in 2019 when up to 12 committee members could stand.*

### **To consider the proposal to change item 17.2 in the Rules and Constitution.**

*17.2 states: Any other sales at club events will be at the discretion of the committee. The aim will be to give members opportunities to purchase goods not on sale in the club shop at various times through the year*

*Change to:*

*17.2 Any other sales at club events will be at the discretion of the committee. The aim will be to give members opportunities to purchase goods not on sale in the club shop, at various*

times through the year. However, the club will not sell electrical items (either new or second-hand). Invited professional turners and traders can sell electrical goods at club nights or at Open Day. Electrical items may be advertised in the newsletter but the club accepts no responsibility for such sales. Any sale of electrical goods is between the buyer and seller.

The reasons for this change were explained and points clarified but the members were happy to vote on this change which was proposed by Jennie Starbuck and seconded by David Stratton. The members agreed with a show of hands and none against.

*These changes will be incorporated into the Constitution which is available on the 'About the Club' page of the SAW website.*

### **The committee for the coming year:**

One of the purposes of the AGM is to elect a new committee. We were sad to see Chris Wild retire from the committee but understandable due to family commitments.

### ***The three officers – Chairman, Treasurer and Secretary***

Members standing for election

*John Sherwood                      Chairman, Proposed by Colin Spain , Seconded by John Creasey*

*Jennie Starbuck                    Secretary, Proposed by David Stratton, Seconded by Colin Spain*

*David Stratton                      Treasurer, Proposed by Richard Davies, Seconded by Mike Spaven*

### **Committee members**

*John Creasey   Richard Davies   Robert Grant   Dorothy Read   Colin Rowe   Colin Spain  
Mike Spaven   Bernie Walker   All had been nominated by David Stratton seconded by Jennie Starbuck.*

*A proposal from the floor to agree all of the committee in one show of hands was agreed and the officers and committee members were duly elected.*

## **The Presentations**

Firstly the results of the Club competition for year 2017 were as follows:

### **Club Competition Standard**

1st    Julia Hammond

2nd    Stephen Evans

3rd    Freddie Ford

### **Club Competition Advanced**

1st    Colin Rowe

2nd    Duncan Clark

3rd    Mike Spaven

### **Club Competition Premier**

1st    Dennis Findlay

2nd    Jim Gaines

3rd    John Sherwood

**The Turner of Year Competition for 2017** was won by Rodney Goodship with his Games Sphere. A stunning piece which I (Colin Spain) had the pleasure of judging.

A couple of First place pieces that won their level of the competition followed by a few from the presentations. Apologies to Dennis Findlay we haven't got a decent picture of your piece.



**Rodney Goodship**  
Games Sphere  
Winner Turner of the Year



**Julia Hammond**  
Club Competition  
winner  
Standard Class



**Colin Rowe**  
Club Competition winner  
Advanced Class  
Vase of spring flowers  
And:  
Gerald the Giraffe



**Denis Findlay**  
Club Competition Winner  
Premier Class



**Colin Rowe**  
Club Competition Winner  
Advanced Class



**Julia Hammond**  
Club Competition Winner  
Standard Class

## **2<sup>nd</sup> Half of the evening**

As you should know by now a lot of work has been done to make it easier for members to know who is near to where each of you live. To this end a map has been set up on Google Maps with a flag of all those taking part. On top of this Mike Spaven has been grouping members who are in close proximity to each other, so the aim of the 2<sup>nd</sup> half was to get each group together to meet each other and exchange views. Jennie had a list of questions and Mike will collate your answers and from this we should get a better feel as to how we can move forward. I think it was a worthwhile exercise and no doubt results will be published in due course. Many thanks to those who took part.

### **March club competition theme**

As the first of our 2018 Practical nights approach so does the first leg of this year's competition. The theme for this time is "Mothers Day" which is on Sunday 11<sup>th</sup> March just after club night. It can be anything for that special lady. It can be spindle work, faceplate, or a mixture.

### **Top Tip**

If you are a Facebook user Are you aware we have our own Facebook page. This is set up as a "secret" site for S.A.W. members only. If you would like to join please contact me Colin Spain, contact details at end of newsletter.



## **Axminster 3rd December**

It was the first time demonstrating at Axminster Basingstoke for Richard Davies and me. We arrived about 9:30 for a 10:00 start when the shop opens. The staff made us very welcome and the coffee machine was on hand. We were using the smaller of their two demonstration lathes the Axminster Trade Series AT1416VS. As Christmas was approaching fast we had decided to turn Christmas decorations. I was on the lathe first and put my hand to a snowman in ash about 7" in height later in the day I would do a slightly different one in maple. Richard turned Christmas trees including an off centre one based on 3 positions which gives an interesting effect around the tree (some of you may have seen him do one on December club night). I can't say it was a busy Sunday but we had a steady number of people watching us



until around 13:30 hrs when it dropped off. The couple in the picture were there for several hours watching and asking questions and were very interested, sadly they weren't local so not in our catchment area, he will be looking for a club near them, his wife was very supportive and I believe he bought a lathe like the one we were using the most we had watching at one time was 6. Due to the low turnout I think we only handed out 4 of our brochures, but we did a fair amount of talking and I gave my snowmen away.

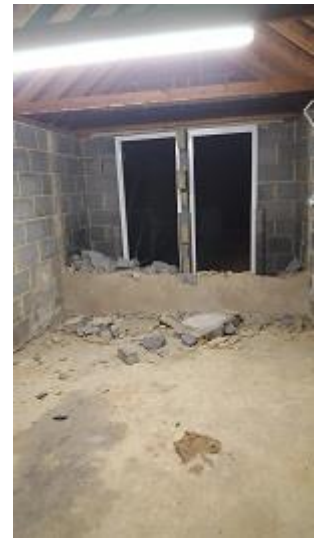
By Colin Spain



## My New Work Shop -Part 1

Having to pack up a very large workshop shop as quite a few of you have seen is not an easy task. In the tidy up I came across things that I had forgot I had, came across a couple of SAFE places that I had forgot about and found some items that were put somewhere safe, found things that I did not really need and made several trips to the dump. I was on a bit of a time schedule due to having a replacement knee operation booked for the 11<sup>th</sup> September. So, the work had to be done before then. I am pleased to say that both things were successful, workshop packed up and knee replaced and working well.

The move date was set at the 27<sup>th</sup> October and the removal men arrived on the 25<sup>th</sup> to start packing the workshop into the lorry. Day one most of the workshop in the lorry in terms of timber stock, racking and small tools. There was somebody inside packing all my wife's breakables. Day 2 was more of the work shop and then started clearing the house. That night we were left with a bed, one TV, and the furniture in our conservatory. It is strange living in an empty house. Friday morning upon us and they turned up again with the two lorries, one with a tail lift, this was need for the big machinery. They all swung into operation and everything was loaded. I watched closely as my most important item was loaded safely aboard the lorry, my One Way lathe weighing in at 850lbs, I had some concerns for her safety. My concerns were unnecessary it went as smoothly as everything else. They finished on time at 1pm. We left our old home Along with Alfie at 2pm to make our way to Ferndown in Bournemouth. Always a bad route especially on a Friday afternoon. Picked up the keys at 5.30pm, entered the new home at 5.45pm. Now for a camping out night, inflatable bed, two collapsible chairs and a take away for supper. There is only a single garage and at the back there are two doors making two storage cupboards. So that wall needed to come down before the removal men arrived to give some much-needed workspace. Before I had a chance to photograph the empty garage Alfie had got stuck in with the sledge hammer and had the wall almost down. The bit left was done first thing Saturday morning before the lorries arrived.



Well done Alfie.

Removal team arrived on time on Saturday and everything was unloaded into the appropriate places. I was busy putting up a 3mtr square gazebo and a portable garage 3.4mtrs by 7.3mtrs. The next three pictures show my workshop in the three storage areas.



The Garage



The Gazebo



The Portable Garage

As you can see I need to fit a quart into a pint pot.

The plan is to build a high standard shed onto the rear of the garage. Once completed I can then remove the two doors at the back of the garage and walk through to the new part of the work shop. This in mind I will need to lay a concrete base the same height as the garage so that there is no step involved.

With this in mind there were 6 conifers behind the workshop and these needed to be removed, which I happened to mention to my sister, who promptly went home (she lives less than 2

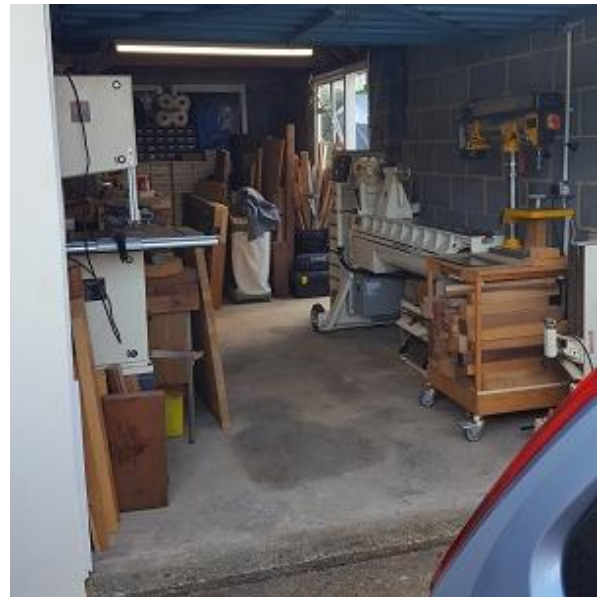
miles from me now) came back with a large pair of lopping shears and cut every branch of the 6 conifers and cut 2 to the base before I was able to take a picture of them. You see the result in the picture. Initially you could only see half of the footpath. Thank you, Denise. I now need to get in a tree surgeon to grind the stumps away. Then we can start on the base. The intended size of the base is going to be 3 metres deep by 10 metres long, which will give 3 X 20 in total. Still a



bit smaller than my old workshop. In order to carry out any work on that I have to make some order in the garage so that I can get to my tools and be able to use them. So that is the next task.

In between all of this I have to help Sylvia with the unpacking, plus having moved from a home with fitted wardrobes and cupboards, we have been out shopping for furniture and now have to wait for delivery of said items. The longest wait is for the fitted wardrobes, mid December. So, we are still living out of boxes as far as clothes are concerned. Not bad for week one.

Well after a good club night Alfie came home with me and we made a start on the garage. The Journey home should have taken just over an hour. M27 was closed at the next junction after I joined it from the M3. What a diversion added 40 minutes to the journey. The aim was to sort out things and get the workshop to a point where I could use it as a work shop to be able to build the shed. I think that was successful. Band saw in a useable position; pillar drill is OK but it is on wheels so can be moved out if necessary. My lathe is more or less in position but I cannot find the feet levelling bits so it is still on its wheels. Alfie's lathe is standing in the corner.



Tomorrow the tree surgeon arrives to grind out the stumps behind the workshop.

Monday 3pm and the team arrive on time. Two trucks with a trailer each and three guys. The first step is to cut down the trunks and get them out of the way. All 8 down to the ground in under 5 minutes, no messing. Once they are removed and out of the way they can start the real work. Now I don't know if you have ever seen a stump grinder, I certainly have not. They unloaded a machine of the trailer that was on tracks and was remotely controlled. This trundled its way down the side of our home and into the rear garden.

You can see the cutting wheel on the machine. They positioned this wheel over the stump and then start it spinning and lowering it onto the stump. The blade then swings sideways across the stump chips and earth fly out the head then drops a notch and swings the opposite way and cuts again.



This continues until the stump is removed to a level 6" below the surface, as you can see in the picture. In no time at all 8 of the all the stumps were removed. This was an amazing machine until it got hooked onto my chain link fence. It took the quite a while to untangle and cut it away. (I didn't want it anyway. So, no loss.)



Now time to get rid of the evidence. Now we have all seen these things in operation, but being up close to one is very different. They carried all the debris out to the front and started to feed this very hungry machine. Chips were flying fast and furious into the back of the truck. This machine even chewed up the 8" diameter trunks. I have to say that I managed to feed it some bits myself, (the little pleasure in life).

Now I am ready to start on the base area. First, I need to remove the remainder of the chain link fence and some paving slabs to get ready for measuring and laying the frame ready for concreting. I am looking at 3 metres by 10 metres as the base size, but who knows once I get out there with the tape measure anything could happen!!!!!!!!!!!!!!!!!!!!!!



Just watch this space for the next instalment.

Paul Nesbitt